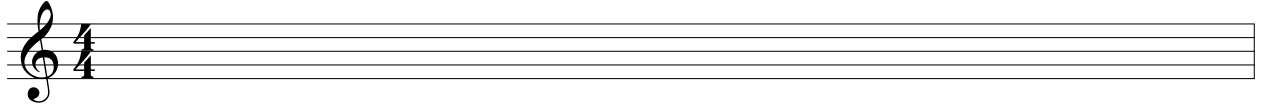


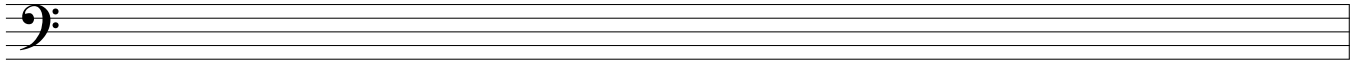
Scale / Chord Exercise

Watch your clef!

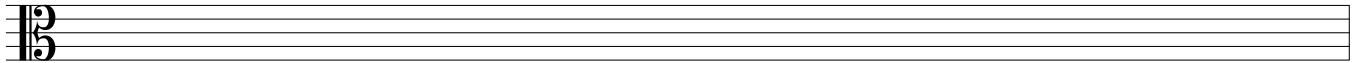
Write out a F Phrygian Scale



2 Write out a B Aeolian Scale



3 Write out a Bb Minor Pentatonic



Write out the chord

4 G Major Triad F minor Triad, 2nd inversion Cb Major Triad, 1st inversion

7 A minor 1st inversion Gb fully diminished, 2nd inversion C half diminished, 3rd inversion

10

D: I⁶ ii⁶⁵ IV^{M43} V⁴² iii vii^{half-*65} I⁶⁴ I

Be careful of altered minor tones!

18

g minor: i ii^{half-*43} iv⁶⁵ III V⁷ vii^{*43} i⁶⁴ i